

Air cleaners for industry and the food manufacturing and preparation sector

Clean air at workplaces thanks to energy-saving and environmentally sound air cleaning with state-of-the-art equipment!



Electrostatic
duct separators
type RK-E
by REVEN®
for many
applications!

General description

The highly efficient duct separator is suitable for the separation of finest aerosols from the exhaust air flow. Sophisticated high-voltage technology ensures the safe and trouble-free operation of the electrostatic duct separator.

The device is delivered as a completely assembled unit and is suitable for installation in horizontal duct sections. The stable and torsion-free enclosure of the duct module is welded from steel sheet with a lacquer finish in RAL 5002. Signal lights on the enclosure indicate the operational status of the device, the need for maintenance and disturbances.

A freely configurable counter allows you to adjust the maintenance interval according to your requirements. A large maintenance door facilitates maintenance and cleaning operations and ensures the easy removal of the electrostatic collectors. The electrostatic duct separator will only run when the maintenance door is shut. Opening of the door during operation triggers the safety shut-down of the device.



Separating efficiencies of the electrical UC extraction devices:

Particle size	0.5 µm	0.8 µm	1.0 µm	3.0 µm	5.0 µm	10.0 µm
Separating efficiency	89 %	95 %	98 %	100 %	100 %	100 %



REVEN® is among the limited number of distributors who specify the separating rates for each individual filter element and each filter combination. A separating efficiency of 100 %, by using a particulate air filter for instance, does not always make sense. → **We would be pleased to advise you.**

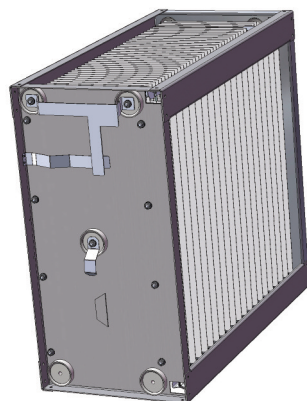
Technical data



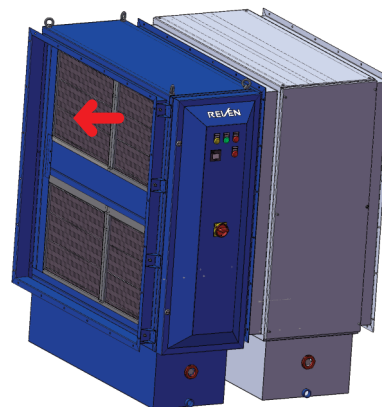
Electrical connection 230 VAC; 50/60 Hz; 16 A high-voltage, adjustable between 6 and 7 kV

Type RK-E	Flow rate in m ³ /h	Height H in mm	Width W in mm	Length L in mm	Duct connector height x width*
900	1200	708	680	660	320 x 320
1200	1600	708	840	660	320 x 490
1700	2400	878	840	660	490 x 490
2500	3300	1018	925	660	620 x 620
4200	6000	1238	1180	660	840 x 840
7500	10000	1508	1385	660	1160 x 1160

* The specified duct connection dimensions are internal clearance dimensions, a circumferential frame of 30 mm should be added on



Electrostatic collector RK-E



RK-E

RK2

← Air flow direction



Rentschler REVEN®
 Lüftungssysteme GmbH
 Ludwigstraße 16-18
 D-74372 Sersheim
 Germany

Phone: +49 (0) 7042 373-0
 Fax: +49 (0) 7042 373-20

info@reven.de
 www.reven.de